



80 - 200 mm



220 - 850



-20 C + 80 C



P	E
<p>Características</p> <p>Rodas em poliuretano "TR"; dureza 95+/-3 Shore A; ótima característica de deslizamento e elasticidade, alta resistência ao desgaste e lacerações; núcleo em alumínio. Ferragem leve (LV), média (LM-NL), média pesada (MP) e pesada (P).</p> <p>Utilização</p> <p>Podem ser utilizadas em ambientes com agentes atmosféricos alcoóis e glicóis; é desaconselhável a utilização em ambientes com óleos orgânicos e minerais, soluções básicas e vapor saturado.</p>	<p>Características</p> <p>Ruedas de poliuretano "TR", dureza 95+/-3 Shore A, excelentes características de deslizamiento y elasticidad, alta resistencia al desgaste y el desgarre; núcleo de aluminio. Soportes industriales (LV), medios (LM-NL), medios pesados (MP) y pesados (P).</p> <p>Utilización</p> <p>Se puede utilizar en ambientes con agentes atmosféricos, alcoholes y glicoles; se desaconseja su utilización en ambientes con aceites orgánicos y minerales, soluciones básicas y vapor saturado.</p>


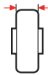
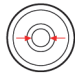


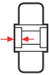







P RODAS EM POLIURETANO “TR”,
NÚCLEO EM ALUMÍNIO

E RUEDAS DE POLIURETANO “TR”,
NUCLEO DE ALUMINIO

 **tellure Rôta**

B65



														
										COD.		COD.		
80	25	12 A	30	28	8	280	150	220	0.20	B652101	0.15	B654101		
100	30	12 A,B	40	32	10	350	225	250	0.34	B652102	0.25	B654102		
125	35	12 A,B	40	32	10	500	280	400	0.50	B652103	0.41	B654103		
150	40	20	50	47	14	850	330	600	0.91	B651104	0.66	B653104		
200	50	20	55	52	15	1000	360	850	1.47	B651106	1.16	B653106		
200	50	25	55	52	15	1000	360	850	1.45	B651206	1.16	B653106		

Para furo de outra medida acrescentar após o Código:

A Furo de 3/8"

B Furo de 7/16"

**RODAS EM POLIURETANO “TR”, NÚCLEO EM ALUMÍNIO
FERRAGEM LEVE (LV), MÉDIA (LM), MÉDIA PESADA (MP)**

RUEDAS DE POLIURETANO “TR”, NUCLEO DE ALUMINIO
SOPORTES INDUSTRIALES (LV), MEDIOS (LM), MEDIOS-PESADOS (MP)



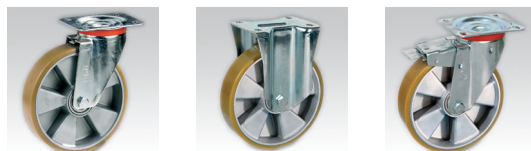
B65



									LV		LV		LV	
										COD.		COD.		COD.
80	25	104	105x80	80x55	9	39	110	150	0.58	B065044	0.49	B065054	0.63	B065064



									LM		LM		LM	
										COD.		COD.		COD.
100	30	138	127x100	95x72	10,5	46	120	250	1.97	B655522	1.28	B655622	2.25	B655722
125	35	161	127x100	95x72	10,5	44	120	300	2.03	B655523	1.32	B655623	2.32	B655723



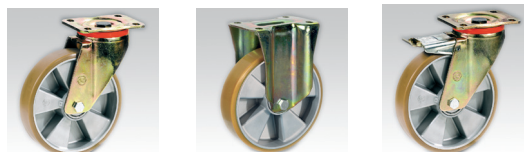
									NL		NL		NL	
										COD.		COD.		COD.
80	25	107	100x85	80x60	9	37	120	200	0.72	B659301	0.52	B658201	0.91	B656501
100	30	128	100x85	80x60	9	35	120	200	0.94	B659302	0.69	B658202	1.08	B656502
125	35	156	100x85	80x60	9	37	120	220	1.14	B659303	0.89	B658203	1.28	B656503
150	40	194	140x110	105x80	11	56	156	300	2.34	B659304	2.04	B658104	2.63	B656504
200	50	240	140x110	105x80	11	56	156	300	3.05	B659306	2.76	B658106	3.25	B656506

**RODAS EM POLIURETANO “TR”, NÚCLEO EM ALUMÍNIO
FERRAGEM LEVE (LV), MÉDIA (LM), MÉDIA PESADA (MP)**

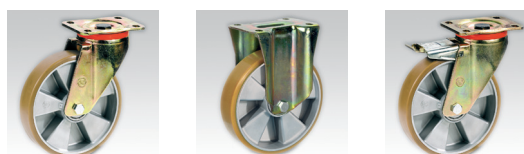
RUEDAS DE POLIURETANO “TR”, NUCLEO DE ALUMINIO
SOPORTES INDUSTRIALES (LV), MEDIOS (LM), MEDIOS-PESADOS (MP)



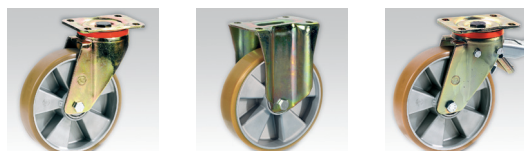
B65



									MP		MP		MP	
										COD.		COD.		COD.
125	35	171	140x130	115x105	13	70	120	400	2.58	B652613	1.61	B652713	2.95	B652813
150	40	197	140x130	115x105	13	70	120	600	3.24	B652624	2.26	B652724	3.61	B652824
200	50	249	140x130	115x105	13	70	120	750	3.92	B652626	2.82	B652726	4.29	B652826



									P		P		P	
										COD.		COD.		COD.
100	30	138	100x85	80x60	9	46	120	250	1.20	B657602	0.82	B658602	1.35	B656602
125	35	161	100x85	80x60	9	44	120	350	1.39	B657603	0.97	B658603	1.54	B656603



									P		P		P	
										COD.		COD.		COD.
150	40	200	140x110	105x80	11	70	126	600	3.18	B657604	2.19	B658604	3.75	B656604
200	50	250	140x110	105x80	11	70	126	750	3.94	B657606	2.48	B658606	4.51	B656606